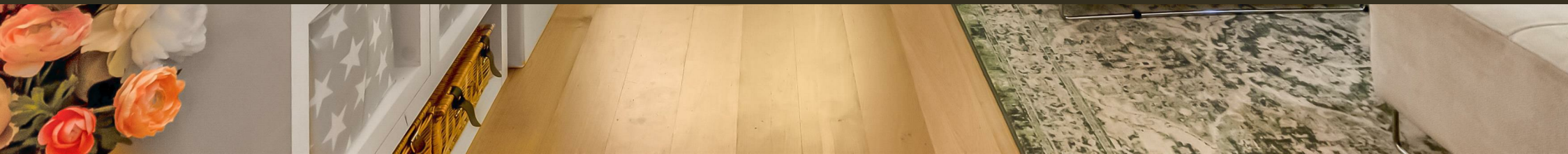




8 Dean Ryle Street,
London SW1P

GARTON JONES.COM



8 Dean Ryle Street,
London, SW1P

GARTON JONES.COM

49 Marsham Street Sales +44 (0) 20 7340 0480
London westminster@gartonjones.com
SW1P 3DP www.gartonjones.com

£795 Per Week

We are pleased to offer this remarkable one bedroom apartment available to let in this extremely sought after development close to the banks of the River Thames. The accommodation offers generous proportions and measures at 749 Square Feet (69.6 Sq.M) and is offered furnished. Internal living space comprises of a separate modern kitchen, reception room with access to a superb private terrace, a modern bathroom and fabulous master bedroom with fitted wardrobes. Further benefits include wood flooring, ample storage and double glazing. Residents of Westminster Green benefit from a 24 hour concierge, lavish lobby area, business suite and a gymnasium. You will be within walking distance to the amenities of Horseferry Road and Victoria Street which include many shops, a Curzon Cinema and a host of new restaurants. The development is also located next door to the international headquarters of Burberry and the Westminster Hotel. The transport links of St James's Park, Westminster and Victoria are all within walking distance. Dean Ryle Street is convenient for access to many of the renowned local landmarks which include the Houses of Parliament, the River Thames and Westminster Abbey.

EPC Rating: C (74)
Council Tax Band F (London Borough of Westminster)
Deposit 5 Weeks
Minimum Term 12 Months

EPC certificate available on request.

- Exceptional One Bedroom Apartment
- 749 Square Feet (69.6 Sq.M)
- Reception Room
- Modern Integrated Kitchen
- Bathroom
- Large Private Terrace
- Available 1st September 2025
- Furnished
- 24 Hour Concierge & Resident's Gymnasium
- Walking Distance to St James` Park & Westminster Tube Links

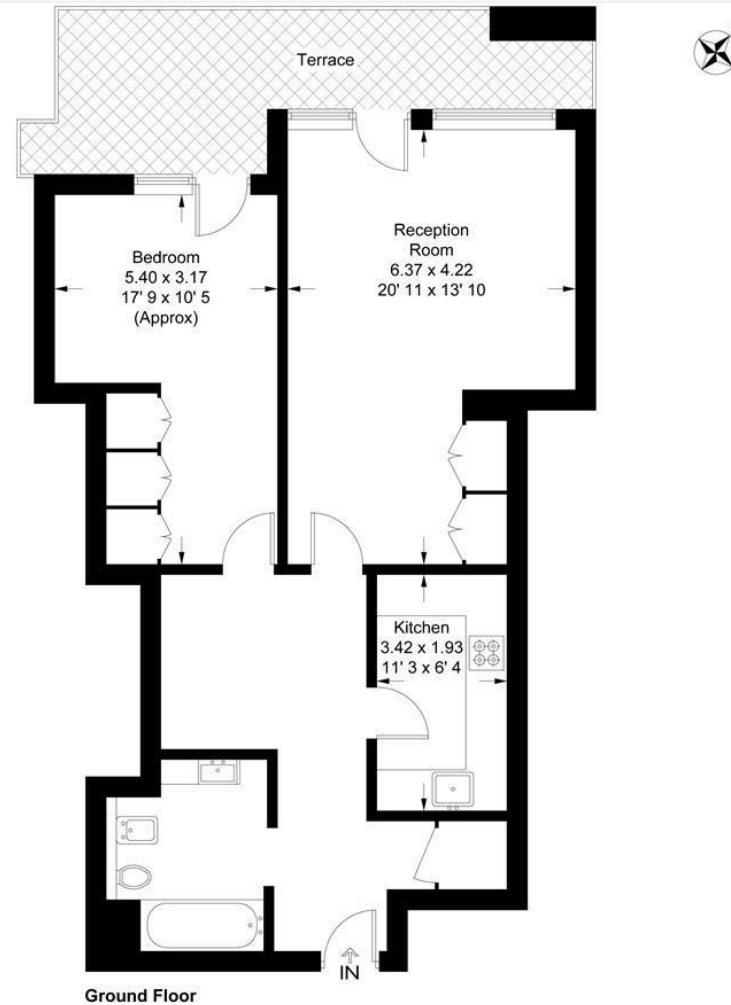


Westminster Green

Approximate Gross Internal Area = 749 sq ft / 69.6 sq m

Terrace = 157 sq ft / 14.6 sq m

GARTON JONES
LONDON



This plan is not to scale and must be used as layout guidance only. All measurements and areas are approximate and should not be relied upon to provide accurate information. This plan must not be relied upon when making property valuations, design considerations or any other such relevant decisions. We accept no responsibility or liability (whether in contract, tort or otherwise) in relation to any loss whatsoever arising from or in connection with any use of this plan or the adequacy, accuracy or completeness of it or any information within it.



